

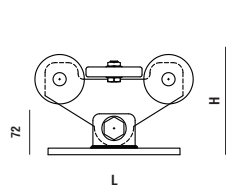
## SERIA 6000

Poarta: G = 560 Kg / L = 6 m



### + SISTEM ROLE

COD	<b>6010</b>
Lungime (L)	<b>200</b>
Inaltime (H)	<b>156</b>
Latime (l)	<b>130</b>

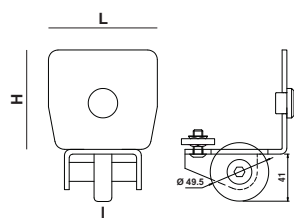


buc.



### + RULMENT CAPAT SINA

COD	<b>6020</b>
Lungime (L)	<b>92</b>
Inaltime (H)	<b>84</b>
Latime (l)	<b>65</b>

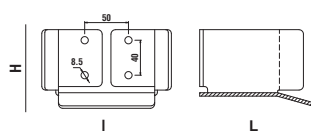


buc.



### + OPRITOR CAPAT CURSA

COD	<b>6030</b>
Lungime (L)	<b>134</b>
Inaltime (H)	<b>69</b>
Latime (l)	<b>110</b>

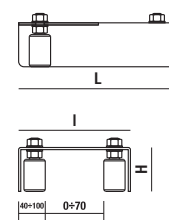


buc.

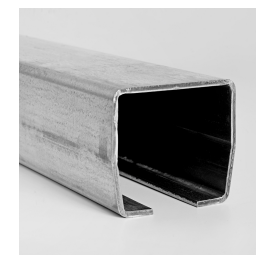


### + GHIDAJ SUPERIOR REGLABIL

COD	<b>222</b>
Lungime (L)	<b>220</b>
Inaltime (H)	<b>60</b>
Latime (l)	<b>150</b>

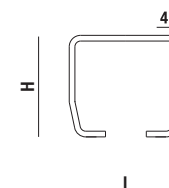


buc.

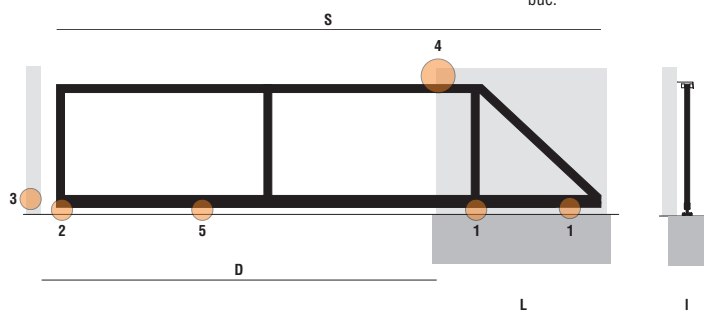


### + SINA ZINCATA RANFORSATA

COD	<b>P.66Z</b>
Lungime (L)	<b>9 (m)</b>
Inaltime (H)	<b>84</b>
Latime (l)	<b>94</b>



m



**LEGENDA**

L x H x l : Dimensiuni fundatie

D : Deschidere poarta

1 : Sistem cu 5 role transport

2 : Rulment capat sina

3 : Opritor capat cursa

4 : Ghidaj superior reglabil

5 : Sina zincata ranforsata

#### FUNDATIE (m)

D	S	Lungime (L)	Adancime (H)	Latime (l)
5	7.6	2.7	0.9	0.6
5.5	8.3	2.9	0.9	0.6
6	9.0	3.1	0.9	0.6